

NTKWG
Thursday 19th July 2018
FEU Report

Track Keeping Performance by Departure Route (%)

	22BZD	22CLN	22DET	deps	04BZD	04CLN	04DET	deps
April	100.00	99.42	96.81	5848	99.82	99.85	95.45	2487
May	99.56	99.81	93.60	3008	99.75	99.22	96.30	5953
June	99.89	99.61	98.46	3620	99.92	99.29	99.05	5558

Track Keeping Performance Total (%)

April	99.68
May	99.49
June	99.64

PBN Reporting for CLN1E

	All Movements	% Track Keeping against +/- 500m swathe	No of PBN Departures	% PBN Track Keeping against +/- 500m swathe
April	3086	95.88	2866	99.83
May	1576	96.76	1466	99.73
June	1798	96.05	1621	99.45

CDA Runway 22 Performance by Time Period (%)

	24 Hr	Day (07:00 – 23:00)	Night (23:00-07:00)	Core Night (23:30-06:00)
April	95.07	95.19	94.40	94.34
May	95.53	95.72	94.54	94.43
June	93.64	93.52	94.11	95.09

CDA Runway 04	Movements	% Core Night (23:30-06:00)
April	305	49.84
May	831	47.77
June	921	59.39

Track Keeping and CDA Worst Performers

Track Keeping

	Departures	%
Cobalt	37	97.30
Cargolux	43	93.02
Air Moldova	57	96.49
Asiana	39	94.87

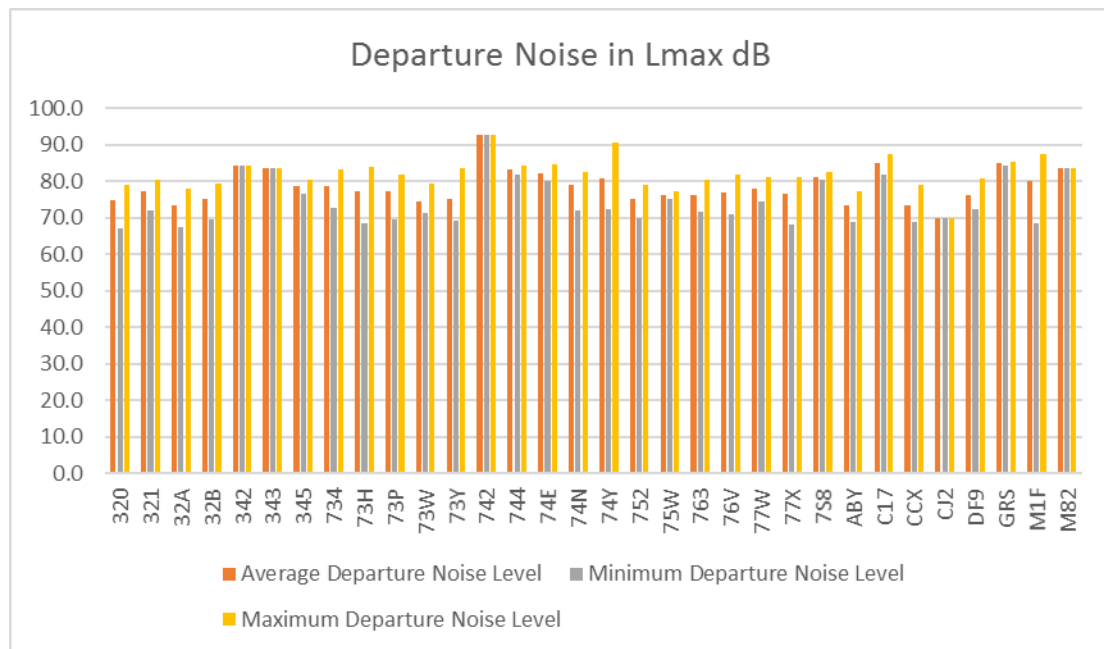
CDA (Runway 22 Daytime)

	Arrivals	%
Atlantic	25	76.00
Asiana	17	76.47
Titan	50	84.00
Air Contractors	213	85.71

Noise Infringements

	Day	Shoulder	Night
April	0	0	0
May	0	0	0
June	0	0	0

Departure Levels recorded at Monitor 10 (Runway 04)

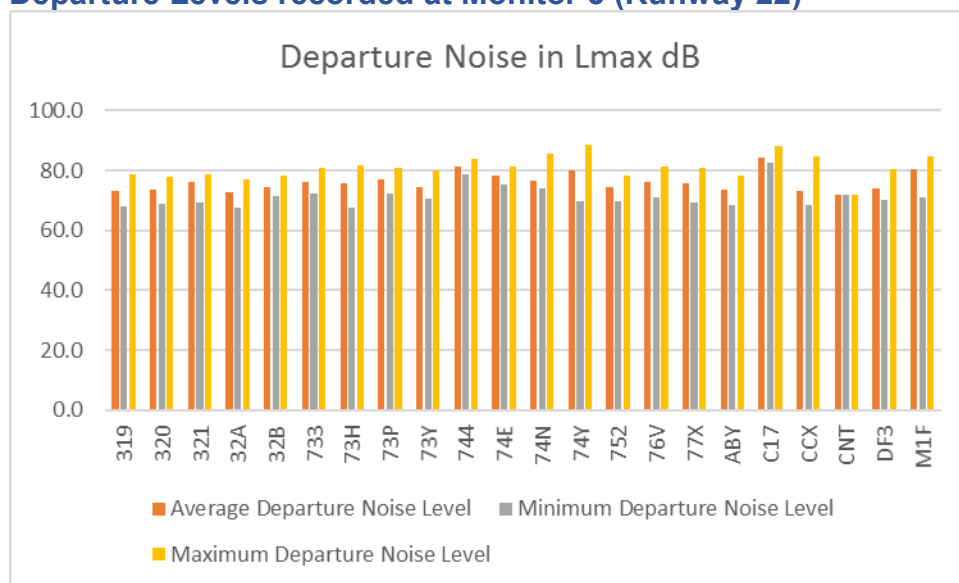


Aircraft Type	No of Departures	Average Departure Noise Level	Minimum Departure Noise Level	Maximum Departure Noise Level
320	388	74.8	67.0	79.1
321	236	77.2	71.9	80.3
32A	202	73.3	67.3	78.1
32B	102	75.1	69.6	79.3
342	1	84.4	84.4	84.4

343	1	83.6	83.6	83.6
345	2	78.6	76.7	80.4
734	36	78.6	72.8	83.1
73H	9695	77.4	68.4	83.8
73P	100	77.2	69.7	81.8
73W	15	74.4	71.2	79.3
73Y	77	75.2	69.2	83.6
742	1	92.7	92.7	92.7
744	7	83.1	81.7	84.4
74E	6	82.2	80.0	84.7
74N	15	79.0	72.1	82.4
74Y	88	80.8	72.3	90.7
752	74	75.0	69.8	78.9
75W	10	76.2	75.2	77.3
763	21	76.1	71.6	80.6
76V	64	76.8	70.8	81.8
77W	15	78.0	74.3	81.3
77X	79	76.5	68.3	81.3
7S8	3	81.2	80.4	82.6
ABY	31	73.5	68.9	77.2
C17	3	85.1	82.0	87.5
CCX	66	73.5	68.8	79.2
CJ2	1	69.9	69.9	69.9
DF9	6	76.4	72.2	80.8
GRS	2	84.9	84.3	85.5
M1F	52	80.0	68.4	87.3
M82	1	83.6	83.6	83.6

Grand Total	11400	77.2	67.0	92.7
--------------------	--------------	-------------	-------------	-------------

Departure Levels recorded at Monitor 5 (Runway 22)



Aircraft Type	No of Departures	Average Departure Noise Level	Minimum Departure Noise Level	Maximum Departure Noise Level
319	875	73.2	68.0	78.9
320	246	73.7	69.0	78.0
321	136	76.0	69.2	78.7
32A	130	72.6	67.4	77.1
32B	54	74.6	71.4	78.3
733	11	76.2	72.4	80.7
73H	4313	75.6	67.5	81.7
73P	86	76.8	72.4	80.9
73Y	61	74.3	70.5	80.0
744	6	81.3	78.9	84.0
74E	3	78.1	75.1	81.4
74N	11	76.8	73.9	85.7
74Y	68	79.8	69.7	88.4
752	52	74.4	69.7	78.2
76V	44	76.2	71.1	81.1
77X	66	75.6	69.2	80.8
ABY	58	73.7	68.4	78.1
C17	5	84.4	82.7	88.1
CCX	46	73.2	68.5	84.7
CNT	1	71.8	71.8	71.8
DF3	3	73.9	70.2	80.6
M1F	42	80.6	71.0	84.9
Grand Total	6317	75.2	67.4	88.4

1000ft Infringements and Missed Approaches

	1000ft Infringements	Missed Approach
April	1	25
May	1	29
June	2	22

Overflight of AIP no Fly Zones

	Bishops Stortford	Stansted Mountfitchet	Sawbridgeworth	St Elizabeth's
April	2	1	0	16
May	4	0	0	18
June	10	0	1	17

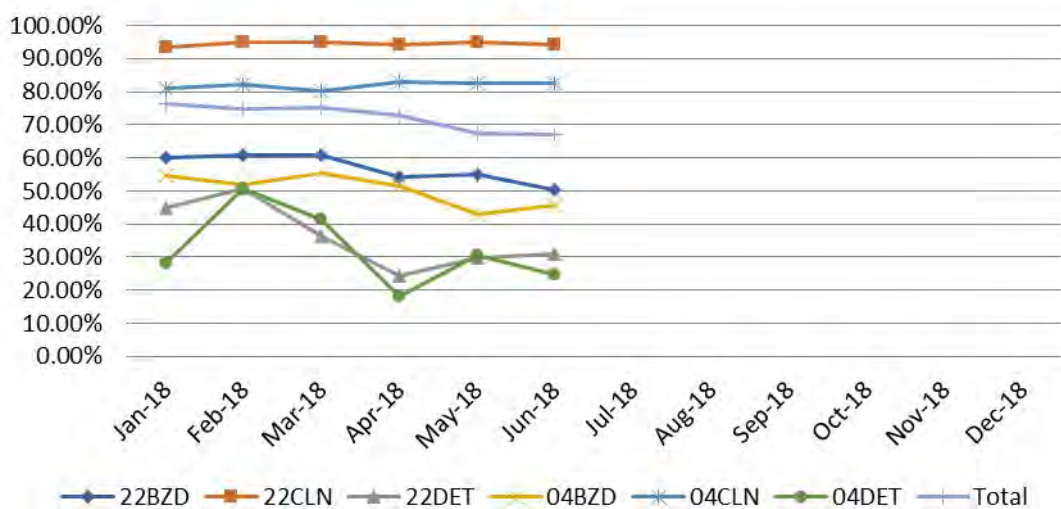
* note, the monitoring of Bishops Stortford is set at 6,000ft QNH, although not specified in the UKAIP. St Elizabeth's is set at 4,000ft QNH and Stansted Mountfitchet and Sawbridgeworth set at 2,500ft QNH

Overflight of AIP no Fly Zones by route

	Bishops Stortford	Stansted Mountfitchet	Sawbridgeworth	St Elizabeth's
22 Arrivals	4	0	0	2
22 Departures	2	1	1	49
04 Arrivals	10	0	0	0
04 Departures	0	0	0	0

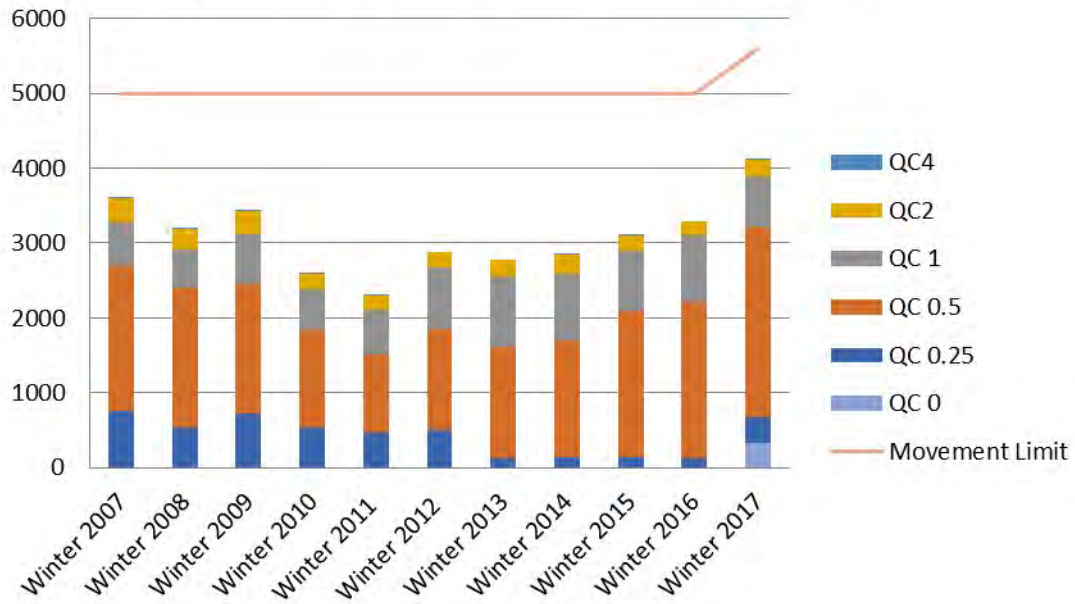
There were 69 flights that penetrated the monitoring zones during this reporting period, an increase from the previous 3 months. In April the overflights of Bishops Stortford were a vectored 04 arrivals at 4,700ft and 1 x runway 22 go-round. The St Elizabeth's overflights were all runway 22 departures all daytime. The overflight of Stansted Mountfitchet was a beech twin light aircraft at 2,100ft. During May the overflights of Bishops Stortford were 1 x runway 22 go-round at 3,000ft a vectored 04 arrival at 5,300ft and 1 x runway 22 departure at 1,800ft. The crew have been contacted via the Stansted Base Captain. The overflights of St Elizabeth's, all above 3,000ft, included 1 x runway 22 go-around and all daytime flights. June saw 1 x overflight of Sawbridgeworth which was a Beech Twin at 2,000ft positioning back to another London aerodrome. There were 7 x vectored runway 04 arrivals all above 5,000ft over Bishops Stortford. All others were St Elizabeth's overflights during the daytime, between 3,500 and 4,000ft runway 22 departures with one runway 22 arrival on a go-round.

Continuous Climb Operations by Route 2018

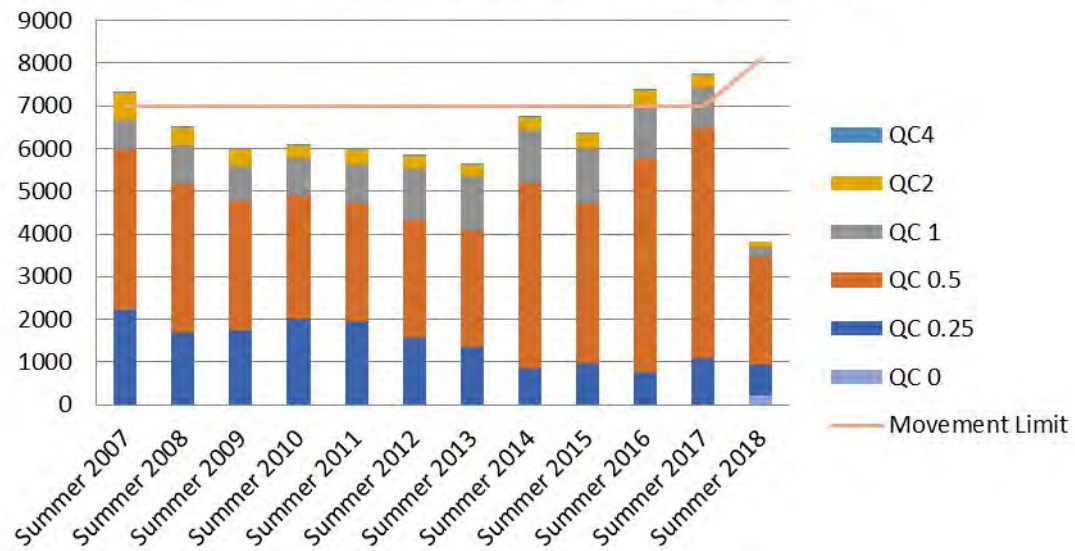


Night Movements by Season

Winter Night Operations by QC Band

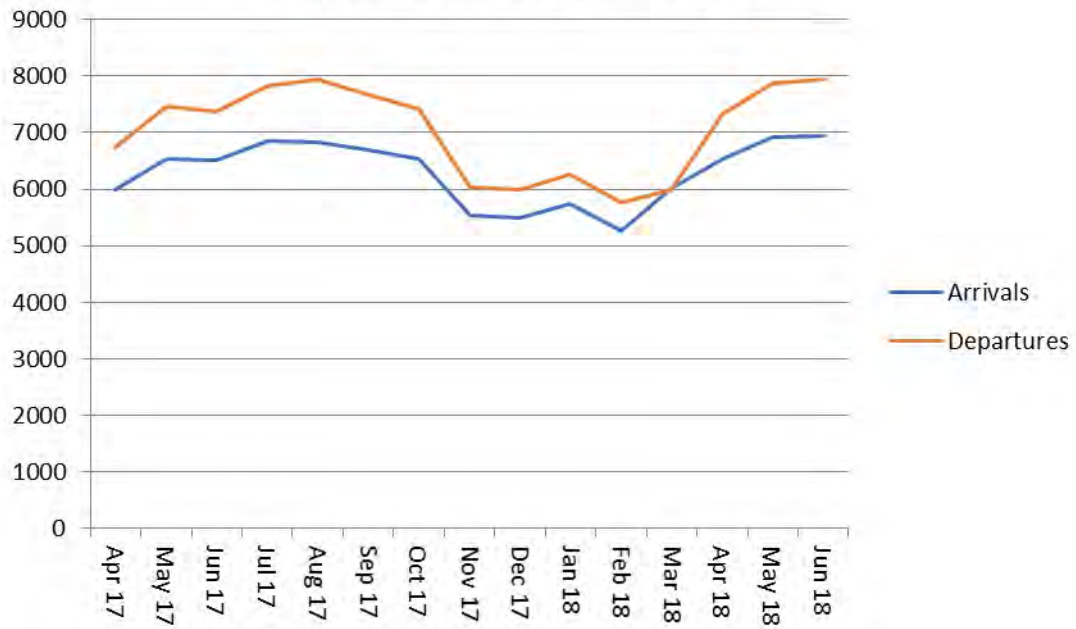


Summer Night Operations by QC Band



Day and Night Operations Trend Data

Daytime Operations Trend



Night Operations Trend

