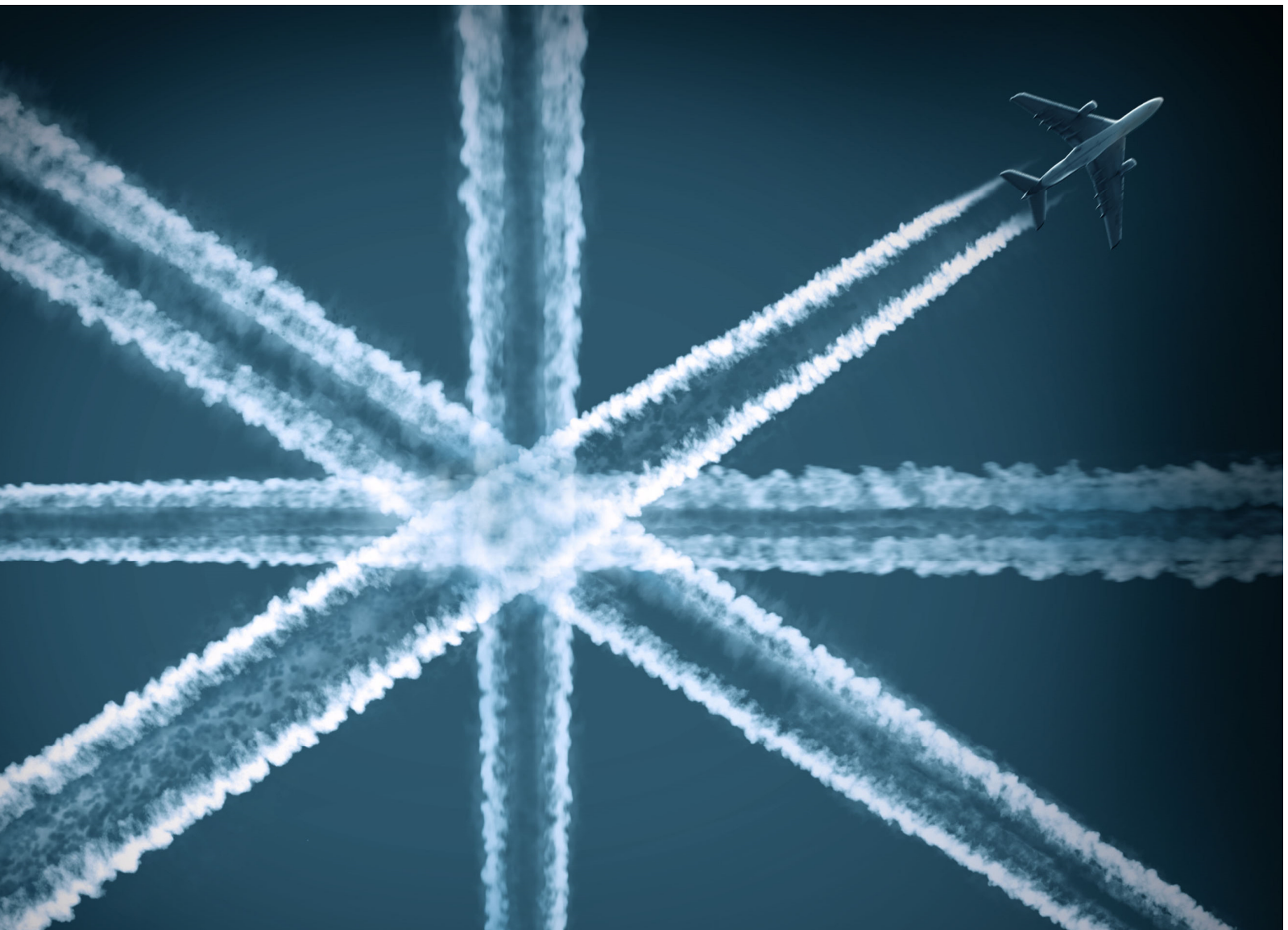


Noise Abatement Summary 2015-16

Airline performance against AIP Noise
Abatement Criteria



Introduction

Under Section 78(1) of the Civil Aviation Act 1982, London Stansted Airport is a noise designated airport by virtue of the Civil Aviation (Designation of Aerodromes) Order 1981, and as such Noise Controls are set by the UK Government.

Details of the noise regulations are cited as the Stansted Airport – London (Noise Abatement Requirements) Notice 2007.

The exact requirements for Noise Abatement are detailed and published in the UKAIP¹ under section 2.21, Noise Abatement Procedures, which includes specific performance requirements for Arriving and Departing aircraft.

Statistics relating to the noise abatement performance at London Stansted are published annually in the airports annual Corporate Sustainability Report²,

For the purposes of this document, the noise abatement requirements have been broken down individually and the Passenger and Cargo operators have also been separated. This report covers the period April 2015 - March 2016.

Noise Abatement Procedures

As described in the UKAIP, there are 4 main noise abatement procedures that are monitored as follows

- 1000ft infringements
- Departure Noise Limits
- Departure Track Keeping
- Continuous Descent Arrivals

¹ http://www.ead.eurocontrol.int/eadbasic/pamslight-F108E0CD2F96AOC22086F9D45EE08F19/7FE5QZZF3FXUS/EN/AIP/AD/EG_AD_2_EGSS_en_2013-04-04.pdf

² <http://www.stanstedairport.com/about-us/stansted-facts-and-figures/our-performance/sustainability>

1000ft infringements

The requirement states that after take-off the aircraft shall be operated in such a way that it is at a height of not less than 1000 ft aal (Above Aerodrome Level) at 6.5 km from start of roll as measured along the departure track of that aircraft.

Departure Noise Limits

London Stansted has 8 fixed noise monitors, 4 at each end the runway.

The departure noise Limits are set as follows

- Daytime – 94dBA Lmax between 07:00 and 23:00 local time
- Shoulder Periods – 89dBA Lmax between 06:00 – 07:00 and 23:00 – 23:30 local time
- Night Time – 87dBA Lmax between 23:30 and 06:00 local time

Any aircraft that exceeds these limits within the time period stated is fined and all monies transferred to the Stansted Airport Community Trust.

Departure Track Keeping

All aircraft except propeller driven with a Maximum Take Off Weight below 5,700kg are required to follow a Noise Preferential Routing (NPR) until a minimum height where they can be vectored by ATC onto another heading.

All routes have a minimum 4,000ft amsl requirement except the 04BUZAD and 22BUZAD NPR's which are 3,000ft amsl between 06:00 and 23:30 local time due to interaction with air traffic from other London Airports.

Continuous Descent Arrivals

Where the aircraft is approaching the aerodrome to land on Runway 22³ it shall commensurate with its ATC clearance minimise noise disturbance by the use of continuous descent and low power, low drag operating procedures.

³ Due to current airspace restrictions around the Brookmans Park area to the south-west of the airport, continuous descent approach is only possible on runway 22, landing from the north-east

Other noise abatement procedures are detailed in the UKAIP, such as Instrument Landing System – Joining Point procedures. These other measures are reported to NATS (National Air Traffic Services) on a monthly basis and form part of a contractual performance.

NATS and aircraft operators have a direct influence on Noise Abatement, and some procedures only work with close co-operation of the aircraft commander and Air Traffic Control.

Where we believe the primary influence lays are detailed below.

1000ft – Aircraft Operator

Departure Noise Limits – Aircraft Operator

Departure Track Keeping – Aircraft Operator and NATS

Continuous Descent Arrivals – Aircraft Operator and NATS

Monitoring

London Stansted has invested in a complex Noise and Track Keeping system, ANOMS. A community flight track replay is also provided by way of another product called Webtrak, and data within Webtrak is publically available for up to 3 months.

You will see variances in the data tables. Performance and nonconformance against the Noise Abatement objectives are magnified if the operator only has a small number of operations per month. Generally, this applies to our cargo operators who have far less aircraft movements than our larger passenger operators. Also, not all operators will have operated for a whole calendar year, so the results have been averaged for the whole time the airline operated. Additionally, an operator is only included if they have operated at least minimum of ten arrivals and ten departures in one calendar month. There are also variances in jet and lighter turbo prop aircraft.

2015-16 Results – Passenger Operators

1000ft @ 6.5km from Start of Roll compliance

Operator	% Compliant
Air Moldova	100
Aurigny	100
BA City Flyer	100
BMI Regional	100
British Airways	100
easyJet	100
Eurowings	100
Flybe	100
German Wings	100
Logan Air	100
Pegasus	100
Ryanair	100
Thomas Cook	100
Thomson Airways	100

Departure Noise Limits (% of departures that did not exceed any limit)

Operator	% Compliant
Air Moldova	100
Aurigny	100
BA City Flyer	100
BMI Regional	100
British Airways	100
easyJet	100
Eurowings	100
Flybe	100
German Wings	100
Logan Air	100
Pegasus	100
Ryanair	100
Thomas Cook	100
Thomson Airways	100

Departure Track Keeping

Operator	% Compliant
Air Moldova	97.76
Aurigny	98.45
BA City Flyer	100
BMI Regional	98.04
British Airways	100
easyJet	99.68
Eurowings	95.32
Flybe	98.77
German Wings	98.24
Logan Air	99.70
Pegasus	97.16
Ryanair	99.78
Thomas Cook	95.14
Thomson Airways	98.67

Continuous Descent Arrival – Runway 22 only

Operator	% Compliant
Air Moldova	83.84
Aurigny	79.43
BA City Flyer	63.64
BMI Regional	80.00
British Airways	85.19
easyJet	93.54
Eurowings	66.67
Flybe	76.67
German Wings	86.71
Logan Air	73.67
Pegasus	89.36
Ryanair	98.96
Thomas Cook	92.22
Thomson Airways	95.67

Total Noise Abatement for Passenger Operators

Operator	% Compliant
Air Moldova	95.40
Aurigny	94.47
BA City Flyer	90.91
BMI Regional	94.51
British Airways	96.30
easyJet	98.31
Eurowings	90.50
Flybe	93.86
German Wings	96.24
Logan Air	93.34
Pegasus	97.16
Ryanair	99.69
Thomas Cook	96.84
Thomson Airways	98.59

2015-16 Results – Cargo Operators

1000ft @ 6.5km from Start of Roll compliance

Operator	% Compliant
ABX	100
Air Contractors	100
Asiana	100
Astral Aviation	100
Atlantic Airlines	100
Atlas Air	96.75
Cargolux	100
China Southern	100
Fedex	100
Jet2	100
Martinair	100
Nordic Global	100
Qatar	100
Swiftair	100
Titan	100
TNT	100
UPS	100
West Air Sweden	100

Departure Noise Limits (% of departures that did not exceed any limit)

Operator	% Compliant
ABX	100
Air Contractors	100
Asiana	100
Astral Aviation	100
Atlantic Airlines	100
Atlas Air	100
Cargolux	100
China Southern	100
Fedex	100
Jet2	100
Martinair	100
Nordic Global	100
Qatar	100
Swiftair	100
Titan	100
TNT	100
UPS	100
West Air Sweden	100

Departure Track Keeping

Operator	% Compliant
ABX	99.77
Air Contractors	97.61
Asiana	96.74
Astral Aviation	96.74
Atlantic Airlines	98.65
Atlas Air	97.40
Cargolux	95.07
China Southern	97.09
Fedex	99.59
Jet2	100
Martinair	99.35
Nordic Global	88.45
Qatar	97.14
Swiftair	97.49
Titan	98.34
TNT	88.82
UPS	99.47
West Air Sweden	98.05

Continuous Descent Arrival – Runway 22 only

Operator	% Compliant
ABX	66.67
Air Contractors	80.77
Asiana	77.78
Astral Aviation	74.65
Atlantic Airlines	93.21
Atlas Air	56.60
Cargolux	68.28
China Southern	53.95
Fedex	90.77
Jet2	89.33
Martinair	85.32
Nordic Global	66.67
Qatar	84.19
Swiftair	62.67
Titan	91.69
TNT	81.30
UPS	97.17
West Air Sweden	85.76

Total Noise Abatement for Cargo Operators

Operator	% Compliant
ABX	91.61
Air Contractors	94.60
Asiana	93.63
Astral Aviation	92.85
Atlantic Airlines	97.97
Atlas Air	87.69
Cargolux	90.84
China Southern	87.76
Fedex	97.59
Jet2	97.33
Martinair	96.17
Nordic Global	88.78
Qatar	95.33
Swiftair	90.04
Titan	97.51
TNT	92.53
UPS	99.16
West Air Sweden	95.95

Total Noise Abatement compliance for all Operations

Operator	% Compliant
Ryanair	99.69
UPS	99.16
Thomson Airways	98.59
easyJet	98.31
Atlantic Airlines	97.97
Fedex	97.59
Titan	97.51
Jet2	97.33
Pegasus	97.16
Thomas Cook	96.84
British Airways	96.30
German Wings	96.24
Martinair	96.17
West Air Sweden	95.95
Air Moldova	95.40
Qatar	95.33
Air Contractors	94.60
BMI Regional	94.51
Aurigny	94.47
Flybe	93.86
Asiana	93.63
Logan Air	93.34
Astral Aviation	92.85
TNT	92.53
ABX	91.61
BA City Flyer	90.91
Cargolux	90.84
Eurowings	90.50
Swiftair	90.04
Nordic Global	88.78
China Southern	87.76
Atlas Air	87.69